

San Telequip (P) Ltd.,
504/505 Deron Heights, Baner Road, Baner
Pune 411045, Mah, India
Phone : +91-20-65001587, 9764027070, 8390069393
email : info@santelequip.com



User's Manual : Isolated, RS232 / RS485 / RS422 to USB Converter. Model SC11U4K

Introduction

The SC11U4K allows you to connect your Serial devices to various systems by using a USB (Universal Serial Bus) Interface. The Serial port is RS232 / RS485 & RS422 configurable. With Auto Detect and Auto baud rate function SC11U4K is able to automatically detect the data flow and switch the direction of the data lines as well as to automatically configure RS422/485 signals to any baud rate. 3000VDC Optical Isolation and Surge-protection on each data line gives the interfacing devices protection from high voltage spikes. It draws Power from the USB port & DC (9V ~24V) Power Adapter (option). SC11U4K supports speed upto 115.2 Kbps for RS485/RS422 and RS232 up to 921.6Kbps. It is fully compatible with USB V1.0 to 2.0

Specification

USB 1.0, 1.1 & 2.0. 12Mbps
Serial Ports: Auto Detect
RS232 signal: Rx, Tx, Gnd, CTS, RTS, DSR, DTR,DCD,RI
RS422 signal: Differential 4 full-duplex wires. (T+, T-, R+, R-)
RS485 signal: Differential 2 half-duplex wires. (D+, D-)
Flow Control: Xon / Xoff or Hardware
Communication Speed: From 300bps to 921.6kbps for RS232 & 115.2kbps for RS485/RS422, Auto switching.
Surge Protection, over current Protection on RS422/485 lines.
Distance: Up to 4000ft (1250M)
Cable : USB Type A to Type B
Connection type: Screw terminal.
Signals LED: Power, USB Ready, TX1, RX1TX2, RX2, TX3, RX3, TX4, RX4.
4 Port Isolation Voltage: 3000V DC
Surge Protection :All 485/422 lines
Operating temperature: 0 to +70 C
Storage temperature: -45 to +85 C
Dimension: 107mm X 183mm X 26mm (W*D*H)
Weight: 500gm
Power Supply : USB Port
Power Adapter 9V~24V DC
OS supported: Windows 98/ME/2000/XP/2003 Server/Vista, Linux, Mac.

LED Indicators

Power (Red) : Power indication
When the power is on and USB port to PC is on ,the LED will be on.
USB Ready (Green): USB device signal indicator.
When the USB signal is detected, the LED will be on.

Port1

TX1 (Red) : Data sent indicator
RX1 (Green) : Data received indicator

Port 2

TX2 (Red) : Data sent indicator
RX2 (Green) : Data received indicator

San Telequip (P) Ltd.,
 504/505 Deron Heights, Baner Road, Baner
 Pune 411045, Mah, India
 Phone : +91-20-65001587, 9764027070, 8390069393
 email : info@santelequip.com



Port 3

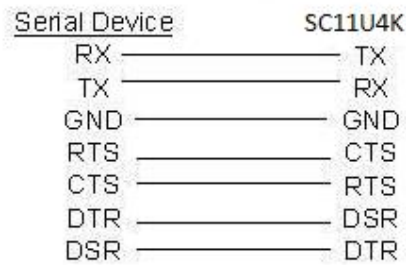
TX3 (Red) : Data sent indicator
 RX3 (Green) : Data received indicator

Port 4

TX4 (Red) : Data sent indicator
 RX4 (Green) : Data received indicator

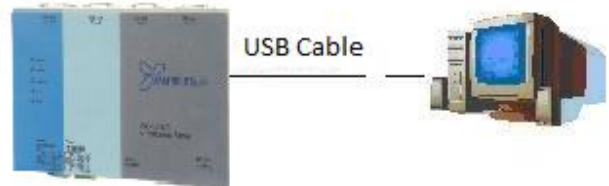
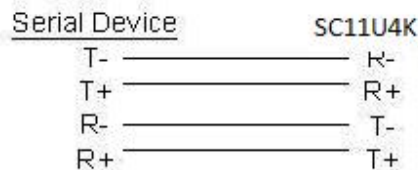
RS232 Connection

RS-232(RTS/CTS , DTR/DSR) Wiring

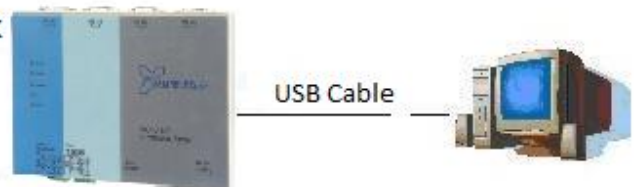
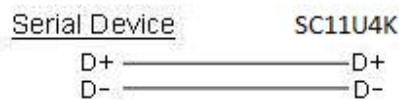


RS422/RS485 Connection

RS-422 Wiring



RS-485 Wiring



San Telequip (P) Ltd.,
504/505 Deron Heights, Baner Road, Baner
Pune 411045, Mah, India
Phone : +91-20-65001587, 9764027070, 8390069393
email : info@santelequip.com

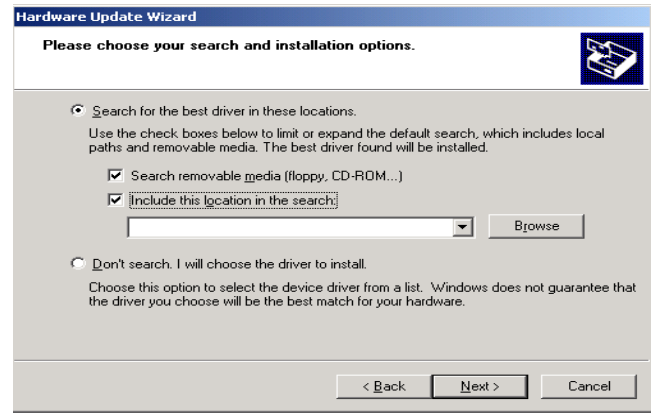
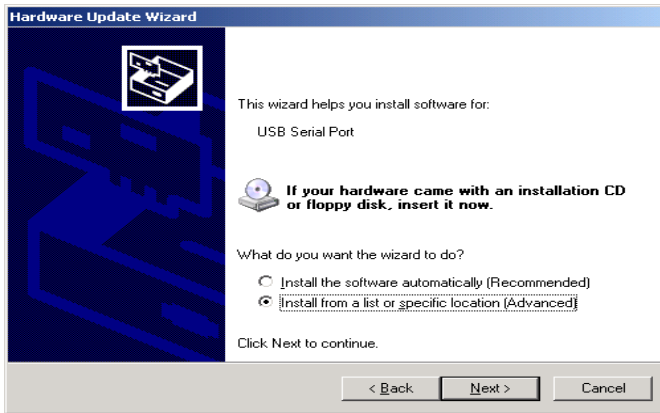


SC11U4K SETUP STEPS

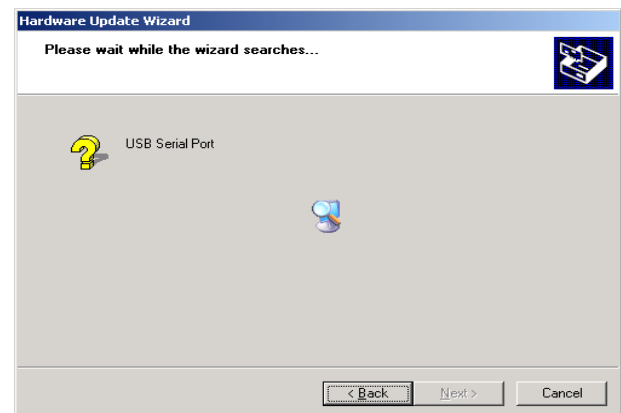
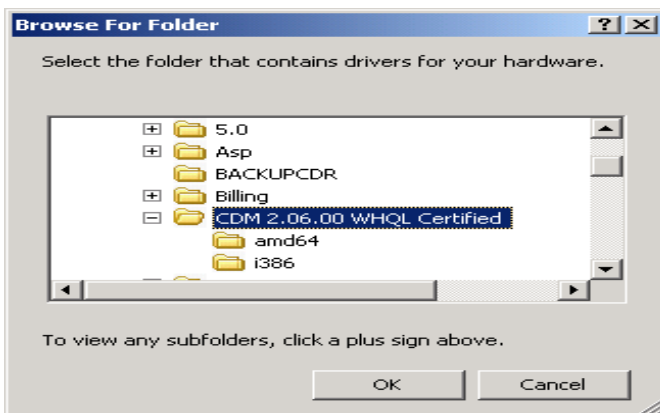
1. Connect the SC11U4K to PC, The converter will be detected by PC as below screen.
2. Select Yes this time only and click on "Next"



3. Select Install from a list or specific location (Advanced), and click on Next.
4. Insert the driver CD to CD-ROM, Checkmark the checkbox of " Include this location in the search", and click on Browse.



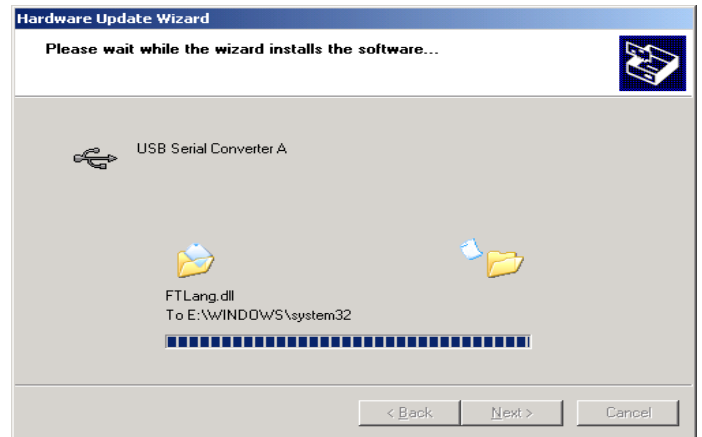
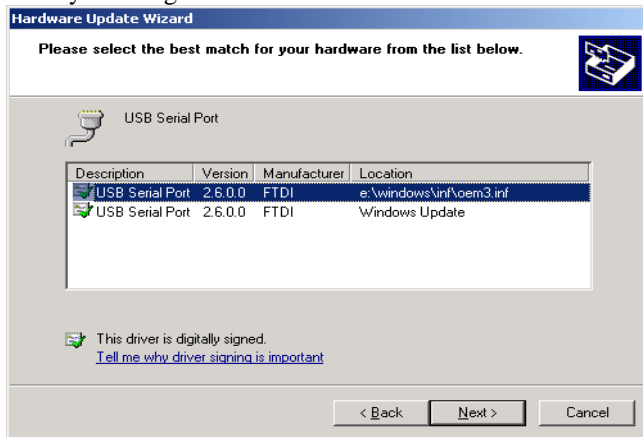
5. The driver CD contains different driver for different O/S ,Choose " CDM 2.06.00 WHQL Certified" then click on OK
6. It will begin to search the driver from indicated path.



San Telequip (P) Ltd.,
504/505 Deron Heights, Baner Road, Baner
Pune 411045, Mah, India
Phone : +91-20-65001587, 9764027070, 8390069393
email : info@santelequip.com



7. Click on Next as below Screen
8. System begins to install the driver as below.

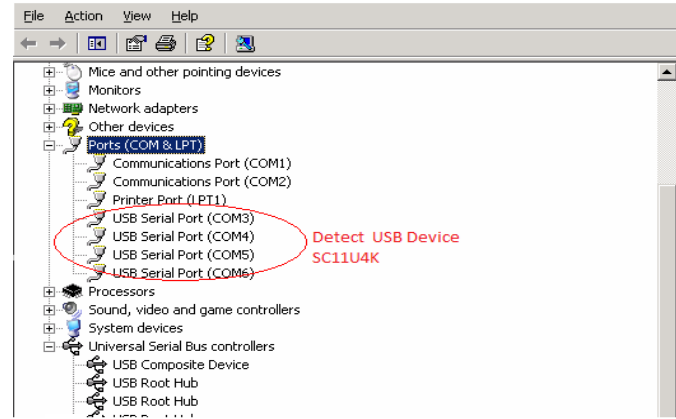
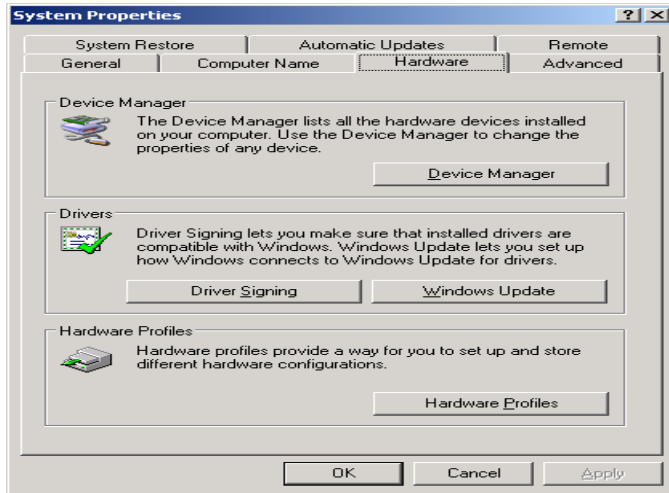


9. Click on Finish as below.



10. Then go to System Properties and choose Device Manager as below Screen. and see if there are 4 ports of USB serial Port correctly displayed, means the installation are complete and correct.

San Telequip (P) Ltd.,
504/505 Deron Heights, Baner Road, Baner
Pune 411045, Mah, India
Phone : +91-20-65001587, 9764027070, 8390069393
email : info@santelequip.com



11. This finishes the installation.